

WINTER 2020-2021 MAKEUP COLOR & SKIN CARE TRENDS

at The Image Enhancement Studio!

To order, call 603.229.0211 or email Janice at jnsev@comcast.net

NEW LIPSTICK COLORS



CHERIE – a sheer, black cherry with a cool undertone



XOXO – a soft, coral pink with a warm undertone

SHEER SHINE Lipsticks

- Sheer, hydrating color
- Weightless wear
- Balmy, high shine finish



PINK ICE Pearl – a light magenta with cool undertone



VENUS Pearl – an amber bronze with warm undertone

20% OFF
THESE
PRODUCTS
THRU DEC. 11!

LUXURY GLOSS: The ultimate in beauty luxury, this formula combines the payoff of a sheer lipstick with the superior shine of a gloss. Formulated with polymer technology, that forms an invisible film that moves with the lips, providing comfort and extended wear. A unique blend of oils condition and hydrate the lips so vertical lines and wrinkles appear less noticeable while lips look smoother and younger.

JOVIAL (warm) ICE WINE (cool) FIRE BRICK (warm) SKINNY DIP (warm) SUGAR BERRY (cool)



LUXURY MASCARA IN NAVY (a beautiful navy): Inspired by advancements

in haircare technology, this 4-in-1 eye awakening mascara curls, volumizes, lengthens and sets lashes into place. The ergonomic brush is designed to fit the contour of the eyes to individually coat each lash for maximum volume impact. Intense color pigments deliver luxurious drama.

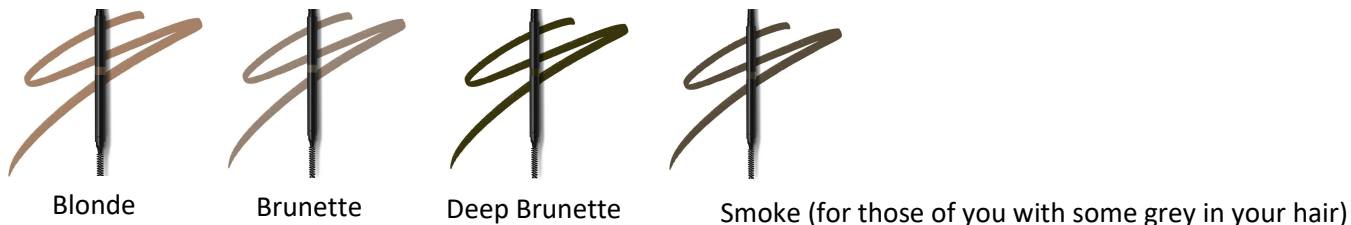
Also available to **Black** and **Black-Brown!**



MINERAL SHEER TINT with Broad Spectrum SPF 20: A lightweight, mineral-enriched, tinted cream with broad spectrum sun protection. Evens skin tone with a sheer natural radiance, as it nourishes, moisturizes, and protects. Available in natural and glowing finishes. Great when you want just a little coverage.



PRECISION BROW PENCIL: Micro precision brow pencil, with built in grooming brush, offers controlled brow filling and lining to quickly and effortlessly impart fuller and natural looking brows. Easy to blend formula lasts for up to 10 hours and creates polished, better defined brows.



MINERAL BLUSH: Silky, mineral-enriched powder blush. Floats over skin to create a streak-free, healthy radiance with a luxurious, longwearing finish.

FORMULATED WITHOUT PARABENS, PHTHALATES, TALC, OIL, SULFATES, GMO, GLUTEN, BARLEY, WHEAT, OAT, RYE, SPELT, CORN, OR ALCOHOL. CRUELTY FREE AND VEGAN.

NEW SHADES



JULIET



PINK QUARTZ



RENOIR

THESE AND ALL MY HIGH-QUALITY SKIN CARE PRODUCTS ARE

20% OFF THROUGH DECEMBER 11!

NEW - GOLD VITAMIN C X 3 with Peptides & Marine Fermentation (1 oz.)



Appearance: Light fluid orange color serum with lightly scented citrus essential oils of grapefruit and lemon.

BENEFITS: Most vitamin C loses potency or is hard for skin to absorb. Gold-stabilized Vitamin-C is highly stable, bioavailable and preserves efficacy for full-strength results every time

KEY INGREDIENTS:

Ascorbic Acid, Gold, Glutathione – Ascorbic acid complex is designed to keep ascorbic acid 100% stable over time and increase the penetration of vitamin C into the skin. By conjugating ascorbic acid to gold, its bioavailability is increased drastically, and glutathione (a vitamin C precursor) helps to replenish ascorbic acid as it is broken down.

Gold (Acetyl Heptapeptide-9, Gold) – A collagen boosting peptide for an anti-wrinkle effect. The peptide is bound to gold to extend the bioactivity of the peptide from 30 minutes to 36 hours.

Terminalia Ferdinandiana (Kakadu Plum) Fruit Extract – Extract from Kakadu plum, which contains the world's highest source of Vitamin C. Studies on this active have shown that it also stimulates the transport of Vitamin C into the skin and boosts collagen synthesis.

Pseudoalteromonas Ferment Extract - Collagen boosting and marine bio-fermented to improve hydration and barrier function, protect skin from blue light pollution, and provide skin with a natural glow.

NEW - INTENSIVE RESCUE CREAM improves micro barrier & eliminates chronic irritation (2 oz.)



APPEARANCE: Natural light green.

USE: Improves micro barrier and reduces itching, stinging and redness. Excellent for eczema/psoriasis. Lightly massage a small amount directly to face, neck, or body. Use twice a day for best results.

BENEFITS:

This formula leaves your skin feeling moisturized all day with immediate and long-lasting relief. Revive and renew dry, itchy skin due to eczema prone skin.

KEY INGREDIENTS:

Ribes Nigrum Seed Oil, Helianthus Annuus Seed oil Unsaponifiables, Cardiospermum Halicacabum Flower/Leaf/Vine Extract, Rosmarinus Officinalis Leaf Extract – anti-inflammatory, replenishes a damaged skin barrier, specifically tested to alleviate symptoms associated with eczema.

Morinda Citrifolia Extract – Rebalances skin's microbiome to improve barrier function, which is compromised in people with eczema/psoriasis. Provides significant moisture, reduces redness and stinging, and decreases the reactivity of sensitive skin to physical and chemical stressors. Also reduces the amount of P. Aureus, which is higher in people with eczema.

Picea Abies Extract– Finnish bark resin associated with wound healing and anti-bacterial properties. Associated with improvement of eczema and psoriasis symptoms.

NEW - ROSE GELEE MOISTURIZER (1.77 oz.)



This silky, water-gel lotion helps protect against environmental aggressors, as it hydrates, soothes & brightens skin. Cushiony, bouncy texture leaves complexion looking & feeling refreshed and revitalized; suppleness is restored.

- Lightweight water-gel texture feels instantly refreshing

KEY INGREDIENTS:

- **Sodium Hyaluronate & Glycerin** super hydrate skin and help improve skin barrier function
- **Rose Oil** helps to soothe, hydrate & brighten skin and protect against free radical aggressors
- **Vitamin E** conditions skin & provides antioxidant benefits

FORMULATED WITHOUT GLUTEN, PARABENS, PHTHALATES, SULFATES, GMO's, SILICONE, CORN, BARLEY, WHEAT, SPELT, OR RYE. NOT TESTED ON ANIMALS, VEGAN.

NEW - ROSE GLOW FACIAL OIL (.60 fl. oz.)



This light-textured, luxurious facial oil, infused with precious rose extract and a blend of nourishing natural oils, extracts & hydrating ingredients, helps smooth & firm skin, soften the appearance fine lines and wrinkles, and restore a luminous glow to the complexion.

- Non-greasy
- Soothes parched skin
- Helps protect skin from free radical aggressors
- Can be worn day or night

KEY INGREDIENTS:

- **Jojoba, Sunflower & Soybean Oils** provide intense moisturization, condition, soothe, calm & help improve the skin's natural barrier function against damaging free radicals, enhancing overall skin texture tone & elasticity
- **Rose Extract** helps soothe, hydrate & brighten skin and protect against free radical aggressors
- **Calendula** nourishes, moisturizes, provides antiseptic benefits & a healthy glow to skin
- **Rosemary** helps smooth & firm skin, provides astringent benefits & antioxidant protection against free radical damage
- **Vitamin E** conditions skin & provides antioxidant benefits

FORMULATED WITHOUT GLUTEN, PARABENS, PHTHALATES, SULFATES, GMO's, SILICONE, CORN, BARLEY, WHEAT, SPELT, OR RYE. NOT TESTED ON ANIMALS, VEGAN.

NEW - NOURISHING SERUM CONCENTRATE (.62 fl. oz.)



This fast-absorbing elixir helps lock in moisture and leaves skin soft and ultra-smooth. It is light-textured and formulated with a blend of natural oils & extracts that soothe & soften skin while providing powerful antioxidant protection.

KEY INGREDIENTS:

- **Jojoba Seed, Sunflower Seed, Hazelnut, Orange Peel & Olive Oils Rich** in Essential Fatty Acids, these oils provide intense moisturization and also brighten, condition, soothe & calm the skin.
- **Rice Bran, Sunflower & Rosemary Leaf Extracts** Help purify the skin & provide antioxidant benefits.
- **Vitamin E** Conditions the skin and protects it against future damage from free radical aggressors

FORMULATED WITHOUT GLUTEN, PARABENS, PHTHALATES, SULFATES, GMO's, SILICONE, CORN, BARLEY, WHEAT, SPELT, OR RYE. NOT TESTED ON ANIMALS, VEGAN.

NEW - SMOOTHING EYE BALM (.13 oz.)



This luxurious balm melts into your undereye area to help soothe and calm stressed tissues. This clean formula can be used day or night to help reduce puffiness and dark circles.

- Helps to deeply condition the delicate eye area
- Glides on easily
- Helps to smooth, firm, and seal in hydration to the eye area

KEY INGREDIENTS

Vitamin A&E help to moisturize and soothe skin.

Sesamum Indicum (Sesame) Seed Oil, Isopropyl Myristate, Cera Alba/ Beeswax/ Cire d'abeille, Caprylic/Capric Triglyceride, Cera Microcristallina/Microcrystalline Wax/Cire microcristalline, Argania Spinosa Kernel Oil, Olea Europaea (Olive) Fruit Oil, Squalane, Vitis Vinifera (Grape) Seed Oil, Acetyl Tetrapeptide-5, Butylene Glycol, Aqua/Water

SUPER FIRMING CRÈME (1 oz.)



APPEARANCE: Ultra-light translucent crème, with orange oil scent.

USE: Apply twice daily to the face and neck, concentrating on special areas in need of extra firmness such as the eye area and jaw line. Can be used under your normal moisturizer or by itself

BENEFITS

Clinical studies confirm the effectiveness of this high-performance crème, showing the reduction of superficial facial lines by 36% within 4 weeks, and increasing skin firmness by 21% with 4 weeks. This high-tech complex provides ingredients which help firm and tighten aging skin, while providing enhanced texture and reduction in the appearance of wrinkles. High doses of Vitamin E and Sodium Hyaluronate help protect and hydrate.

KEY INGREDIENTS

Coneflower Extract – (Echinacea purpurea)- Has been known to have strong anti-inflammatory and immune enhancing properties.

Hydrocotyl Extract (Centella asiatica) -- Also known as Gotu Kola, it is recognized for its healing properties.

Vitamin E – Antioxidant - Maximum dose is incorporated in this formula to help nourish and protect the skin from the breakdown of premature aging, caused by free radicals.

Panthenol – Vitamin B5 - Known for its revitalizing effect on the skin.

Sodium Hyaluronate – Known as an excellent emollient humectant which moisturizes, lubricates, and soothes the skin. Maximum dose is incorporated in this formula.

MARJA FIRM CRÈME with antiaging and conditioning entourage effects (1 oz.)



APPEARANCE: Silky light fluid cream color serum with lightly scented essential oils of Lavender and Vanilla.

An entourage effect of incredible preforming ingredients to take your complexion to the highest level of perfection. The incorporation of an entourage of high performing ingredients serve as the newest technology skin care ingredients to address a multitude of conditions such as fine lines around eye, forehead and neck areas. This serum will also address lifting and firming effects for that fresh and glowing complexion. *For all skin types.*

KEY INGREDIENTS:

Leontopodium Alpinum Callus Culture Extract- Edelweiss is not just a gorgeous flower; it is also a wonderful remedy for your skin. The excellent ability of the plant to protect itself from the harmful ultraviolet radiations makes it a great remedy for protecting your skin. The Edelweiss extract also contains antimicrobial properties that further make it useful for protecting your skin against infections. This specialized Edelweiss Flower has Clinical studies showing a 10% to 56% reduction of surface sagging skin with results of tightening, contouring, and lifting effects.

Sodium Hyaluronate - known for hydrating and soothing the skin Jojoba Esters – Increases hydration levels in the skin.

Palmitoyl Hextapeptide – 52 Palmitoyl Heptapeptide-18 - improves skin barrier function, addresses deep forehead and crow's feet wrinkles dramatically.

Acetyl Heptapeptide – 9 – Colloidal Gold - a new revolutionary collagen boosting peptide that combines the luxury of precious metals, platinum and gold, with the efficacy of peptides. These extremely effective anti-aging peptides act as collagen boosters by affixing to platinum and gold carrier particles to create a unique delivery system. Peptide conjugation is a giant step forward in traditional free-peptide technology because it offers better performance, higher stability. Newest valuable technology Gold suspension system increases peptide life in the skin extending peptide effect and potency. This unique and advanced system dramatically improves dermal regeneration and surface collagen synthesis.

Heptapeptide 15 Palmitate - Advanced new drone technology delivery system to address deep forehead, and facial fine lines. Hydra filling effects.

Withania Somnifera (Ashwagandha) Root Extract - The herb is anti-inflammatory, so it is perfect for wounds, blemishes, or skin irritations. Ashwagandha root has both antibacterial and antimicrobial properties.

PORE PERFECTING PEEL OFF MASK (2.5 fl. oz.)



This cooling, clay mask helps deep clean the complexion and peel away dull surface cells, dirt, and debris. Enriched with algae-based skin tighteners to instantly refine the appearance of pores, and an advanced humectant complex to hydrate and refresh skin. *For all skin types*